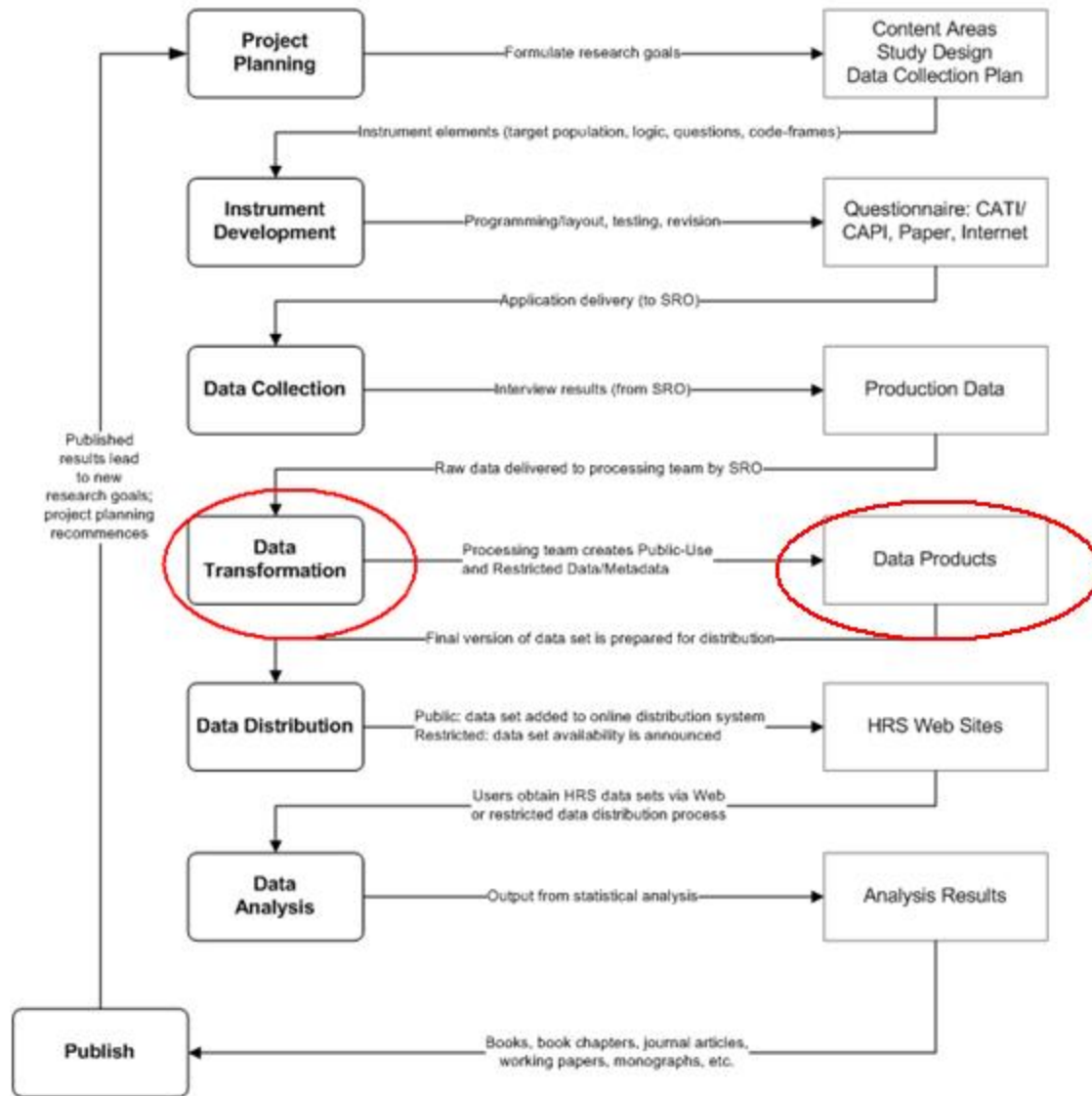




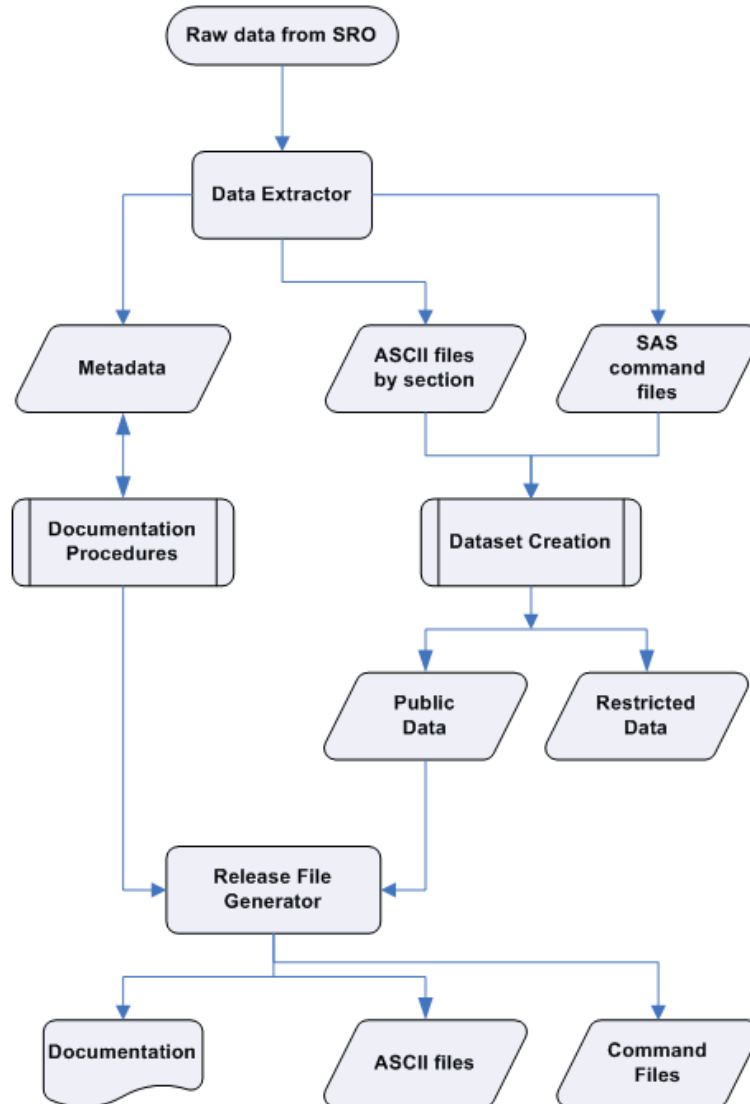
Data Transformation Procedures

Codebooks

Health and Retirement Study: Data Flow



Data and Metadata Extraction



Data Extractor

HRS Data Extractor

Please Locate the BMI:

Please Locate MDB:

Output Project Directory:

Skip Section A2

Current Status:
AllFields table complete.
Total time: 0.00640424166666667 minutes.

HRS Product Release Guidelines

- The standard HRS product release package includes the following elements:
- ASCII data files (by section and level)
- ASCII codebook files describing each data file
- SAS, Stata, and SPSS command files for use in creating system files from ASCII data
- See the HRS Web site, <http://hrsonline.isr.umich.edu/>, for further details.

HRS Product Release File Generator

HRS Release File Generator

Codebook database:
V:\SECURE\DeathDate\exitdodcdbk.mdb Browse

Validate DB

Status:
Waiting for Validated Database

Current Output Location:
Ascii Codebook: V:\SECURE\DeathDate\distro\docs\
Make Statements: V:\SECURE\DeathDate\make\
SAS Statements: V:\SECURE\DeathDate\distro\sas\
SPSS Statements: V:\SECURE\DeathDate\distro\spss\
Stata Statements: V:\SECURE\DeathDate\distro\stata\
Output Defaults

Generate Codebooks
Ascii
HTML

Generate Release Statements
Make SAS
SPSS Stata
 Produce checking programs Exit

HRS Product Release File Generator

parameters

General Settings:

Wave Designator (ex: "H06")

Check Here for CAMS style release (files will use Full Ascii codebook name.)
 Check Here if release uses meaningful missing codes

Release Name (ie "HRS 2006 Early Release") Varname size override:

Full ASCII Codebook Name (ex: "h2006cb")

Output Codebook Directory:

Make Files:

.da Destination Directory:

Working Data directory:

.SAS Program save location:

SAS Statements:

Data user library name (ex: 2006 early = "H2006")

Data user library location (ex: 2006 Early = "c:\hrs2006\sas")

Data user infile location (ex: 2006 Early = "c:\hrs2006\data")

Destination directory for created sas programs

SPSS Statements:

Data user data save location (ex: 2006 Early = "c:\hrs2006\spss")

Data user infile location (ex: 2006 Early = "c:\hrs2006\data")

Destination directory for created SPSS programs

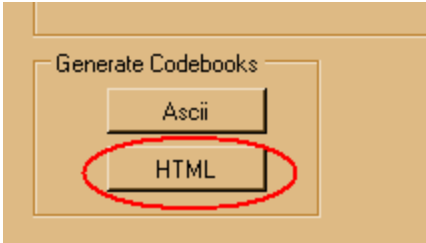
Stata Statements:

Data user data save location (ex: 2006 Early = "c:\hrs2006\stata")

Data user infile location (ex: 2006 Early = "c:\hrs2006\data")

Destination directory for created Stata programs

Codebooks for Web Site



Demographics

Question Finder

Codebook

- [HHID](#) HOUSEHOLD IDENTIFICATION NUMBER
- [PN](#) RESPONDENT PERSON IDENTIFICATION NUMBER
- [LSUBHH](#) 2008 SUB HOUSEHOLD IDENTIFICATION NUMBER
- [KSUBHH](#) 2006 SUB HOUSEHOLD IDENTIFICATION NUMBER
- [LPN SP](#) 2008 SPOUSE/PARTNER PERSON NUMBER
- [LCSR](#) 2008 WHETHER COVERSHEET RESPONDENT
- [LFAMR](#) 2008 WHETHER FAMILY RESPONDENT
- [LFINR](#) 2008 WHETHER FINANCIAL RESPONDENT
- [LB084](#) IW MODE
- [LB000](#) LIFE SATISFATION
- [LB001](#) INTRO-DEMOGRAPHICS
- [LB002](#) BORN IN US
- [LB003M](#) STATE BORN - MASKED
- [LB006](#) ARRIVE IN US-YEAR
- [LB007](#) ARRIVE IN US-YEARS AGO
- [LB008](#) ARRIVE IN US-AT AGE
- [LB009](#) EVER LEAVE US
- [LB010](#) RETURNED TO US-YEAR
- [LB011](#) RETURNED TO US-YEARS AGO

```

=====
Section B: DEMOGRAPHICS (Respondent)
=====

HHID          HOUSEHOLD IDENTIFICATION NUMBER
Section: B    Level: Respondent    Type: Character  Width: 6  Decimals: 0
.....
17217          000003-502761.  Household Identification Number
=====

PN          RESPONDENT PERSON IDENTIFICATION NUMBER
Section: B  Level: Respondent    Type: Character  Width: 3  Decimals: 0
.....
9139          010.  Person Identifier
585           011.  Person Identifier
27            012.  Person Identifier
1             013.  Person Identifier
5474          020.  Person Identifier
    
```

Why HTML Anchor Tags are a Good Thing

Concordance

Wave	Variable Name	Base	Long Label	Category	Subcategory	Detail	Xref
2008 Core	LA033	A033	SP/P IN NURSHOME	CoverScreen	Living Arrangements	Spouse/Partner in Nursing Home	[Xref]

=====

```
<a name="ALAO33H"></a>
```

ASK:

```
IF A047_ = EMPTY AND (HH.X024_ReIwHH_V = YES);  
IF ptSCVXR1_R2 <> SECOND;  
IF A030_LivTogethr = NO;
```

OR

```
NOT(IF A047_ = EMPTY AND (HH.X024_ReIwHH_V = YES));  
IF ptSCVXR1_R2 <> SECOND;  
IF A030_LivTogethr = NO;
```

LA033

SP/P IN NURSHOME

Section: A Level: Household

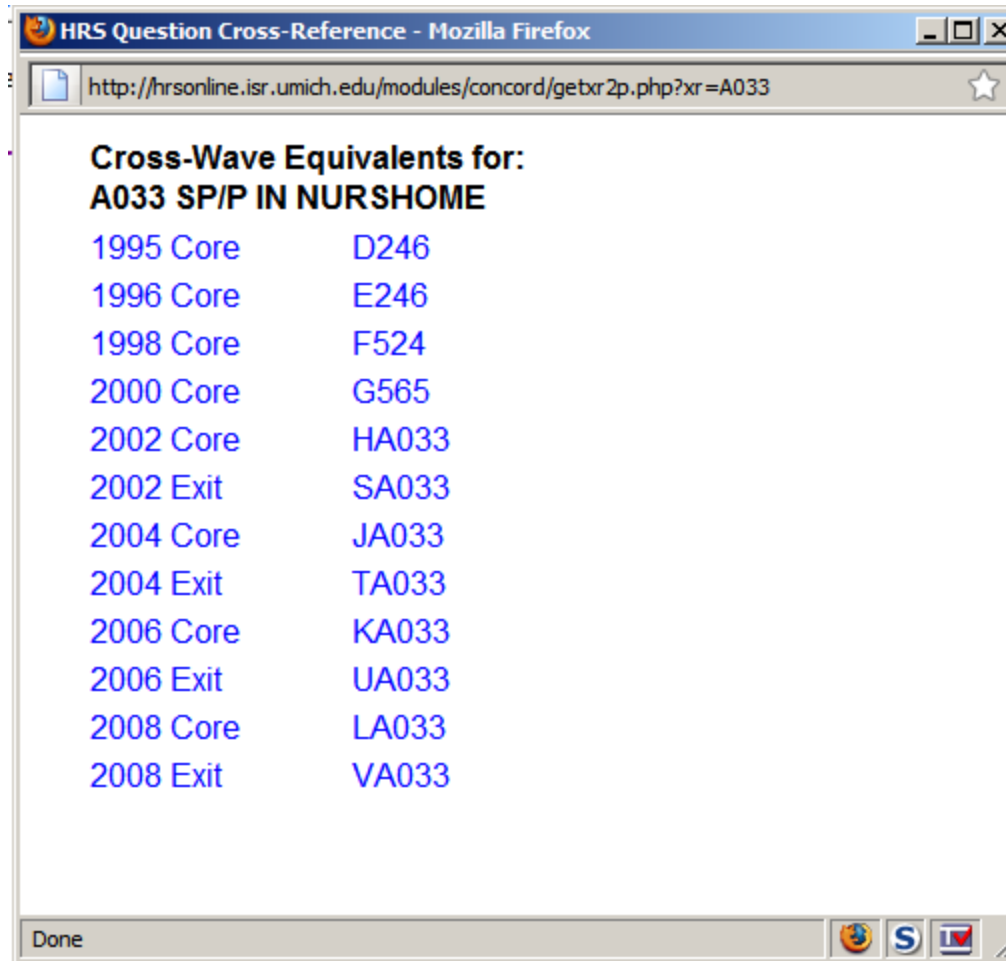
Type: Numeric

Width: 1

Decimals: 0

Ref: SecA.Relations.A033_SpInNHome

Cross-Year Codebook Linkages



The screenshot shows a Mozilla Firefox browser window with the title "HRS Question Cross-Reference - Mozilla Firefox". The address bar contains the URL "http://hrsonline.isr.umich.edu/modules/concord/getxr2p.php?xr=A033". The main content area displays the following text:

**Cross-Wave Equivalents for:
A033 SP/P IN NURSHOME**

1995 Core	D246
1996 Core	E246
1998 Core	F524
2000 Core	G565
2002 Core	HA033
2002 Exit	SA033
2004 Core	JA033
2004 Exit	TA033
2006 Core	KA033
2006 Exit	UA033
2008 Core	LA033
2008 Exit	VA033

The browser's status bar at the bottom shows "Done" and several icons including the Firefox logo, a search icon, and a mail icon.