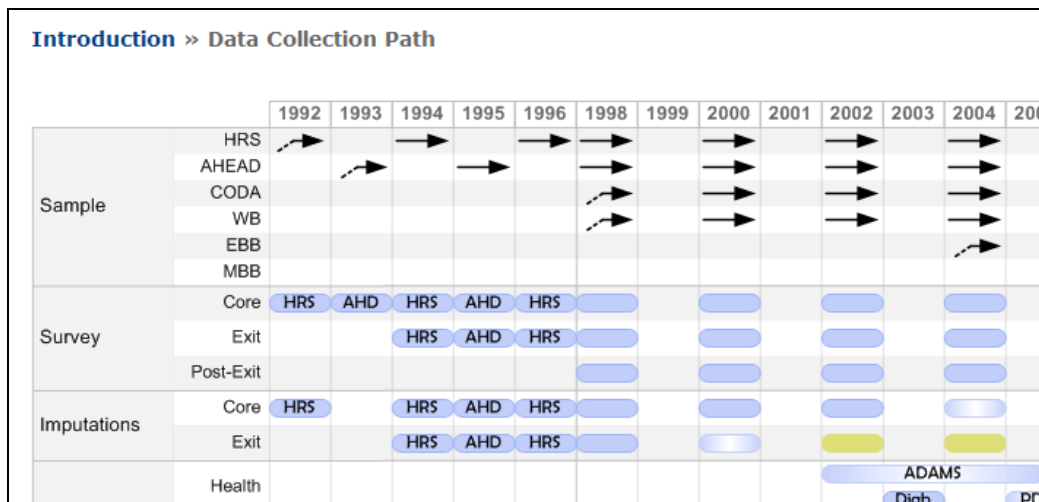


Maintaining the “Data Flow” Client-Side Image Map Diagram

Background

A popular feature of the HRS Web site is the [Data Flow](#) page. This portion of the site provides users with a visual overview of HRS sample components, biennial data products, off-year studies, and cross-year products. When users click on one of the product icons on this page, a popup window appears containing metadata information for that product.

Whenever a new product is added to the HRS collection, or when the composition of the HRS sample changes, it is necessary to update the Data Flow page. This document explains how to do this. Note: You will need a working knowledge of Visio, Dreamweaver, (X)HTML client-side image map procedures, Microsoft Access, and the structure of the HRS Web site in order to complete this task successfully.



We assume that you will have completed these preliminary steps prior to updating the Data Flow page:

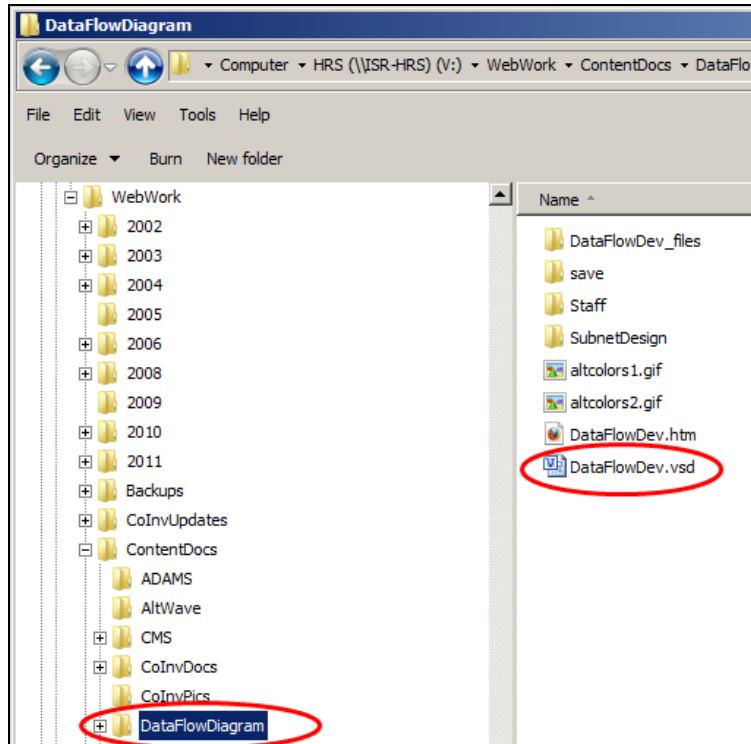
- Add the new or changed product to the file distribution system¹
- Update the content database with new or changed summary information²
- Make other changes as necessary to the HRS Web site.

¹ V:\WebWork\WebSiteDocs\FileDownload\FileDistro.doc

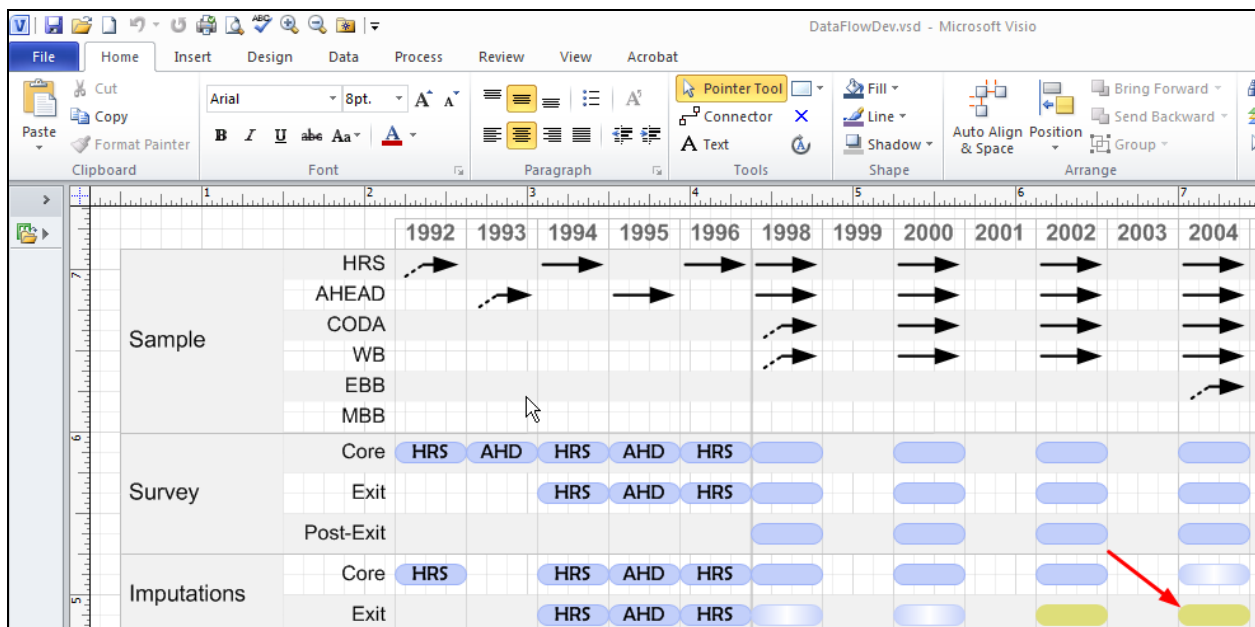
² V:\WebWork\WebSiteDocs\ContentsDB\ContentDB.doc

Making Changes to the Image

Step 1: Open the Visio Professional file

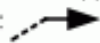
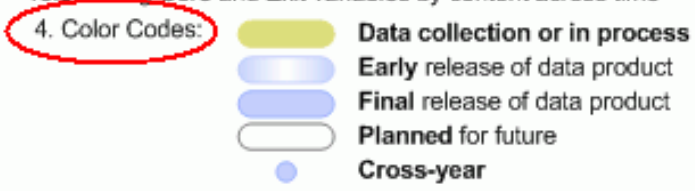


Step 2: Make changes as needed to the Visio file image

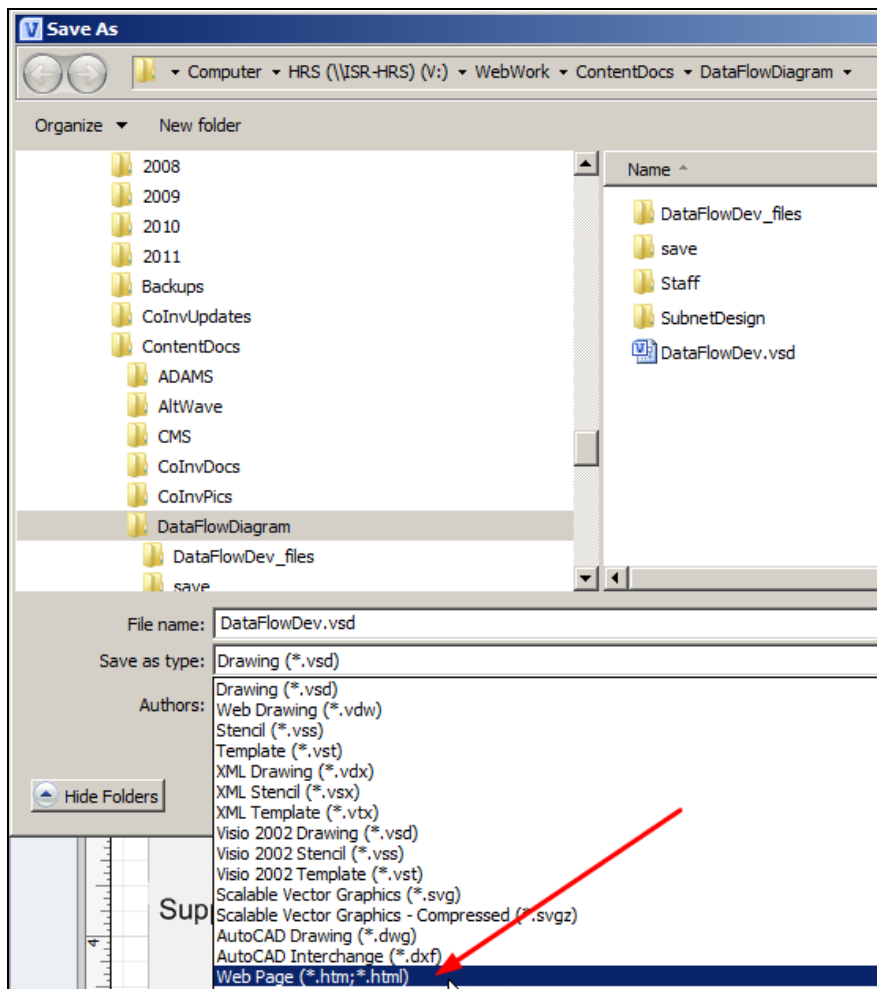


For example, you might want to change an early release symbol to a final release symbol.

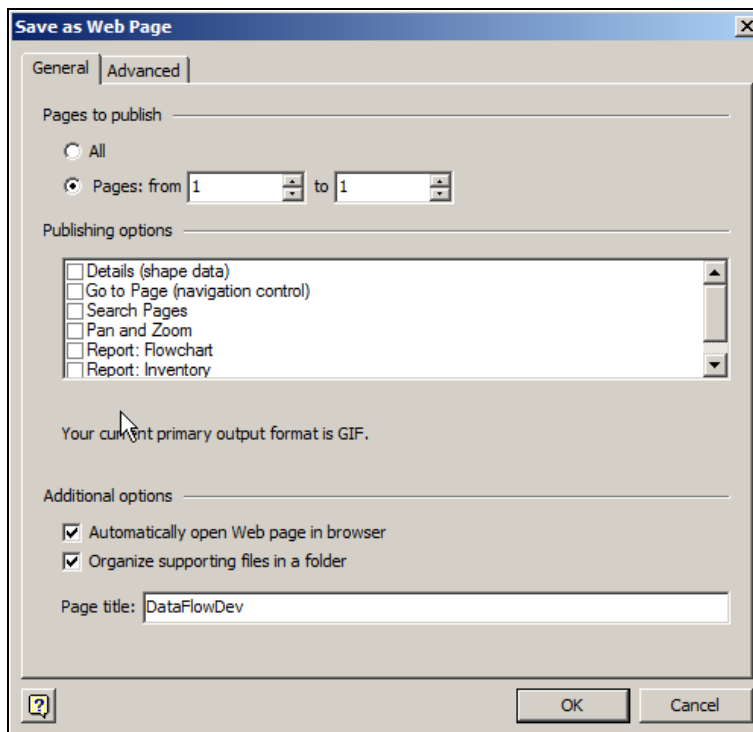
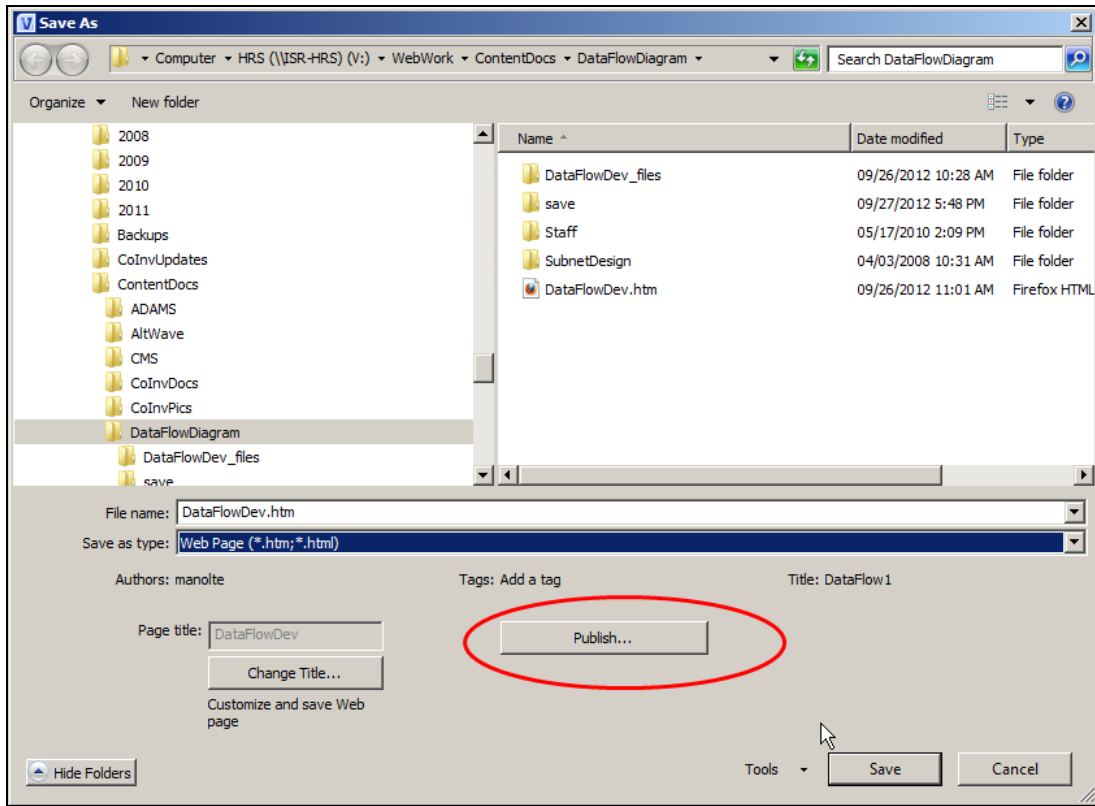
Notes:

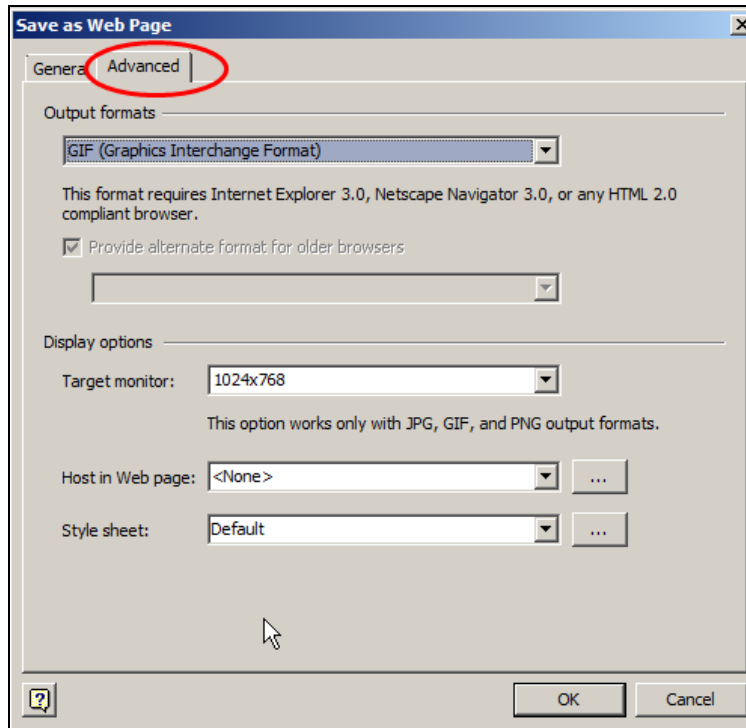
1. For product information, click on the appropriate arrow or box
2. Initial interview year for cohort: 
3. Use the [Question Concordance](#) as a tool for cross-referencing Core and Exit variables by content across time
4. Color Codes: 

Step 3: Save the Visio image as a Web (HTML) page.



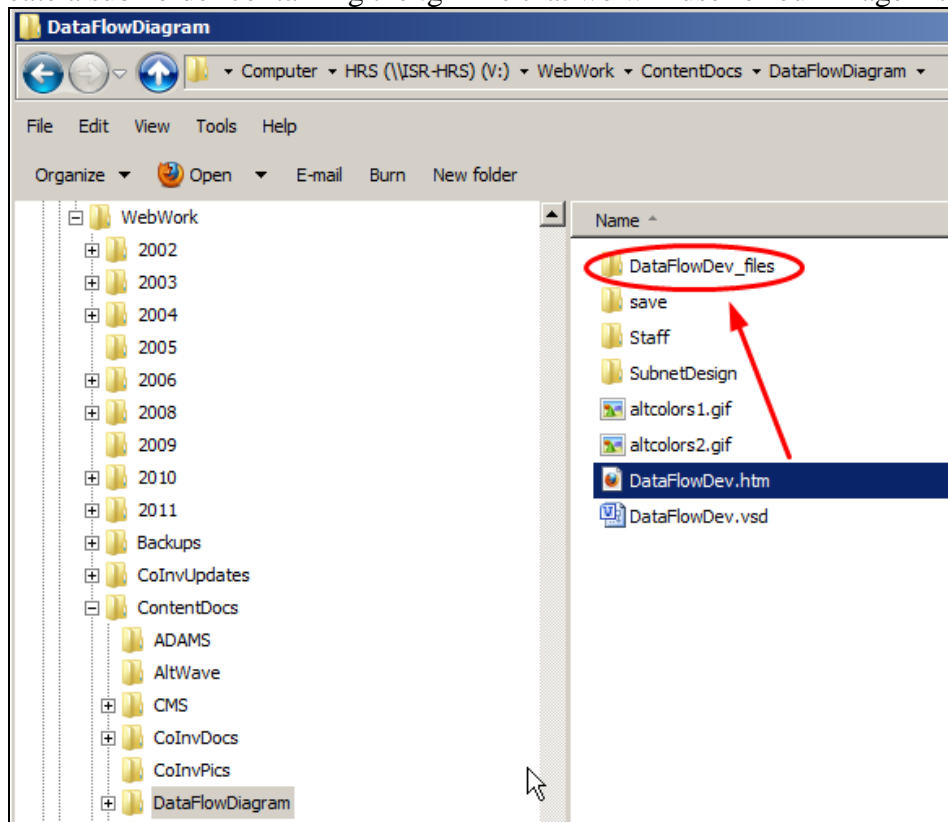
Save as Web page; then click on “Publish”.



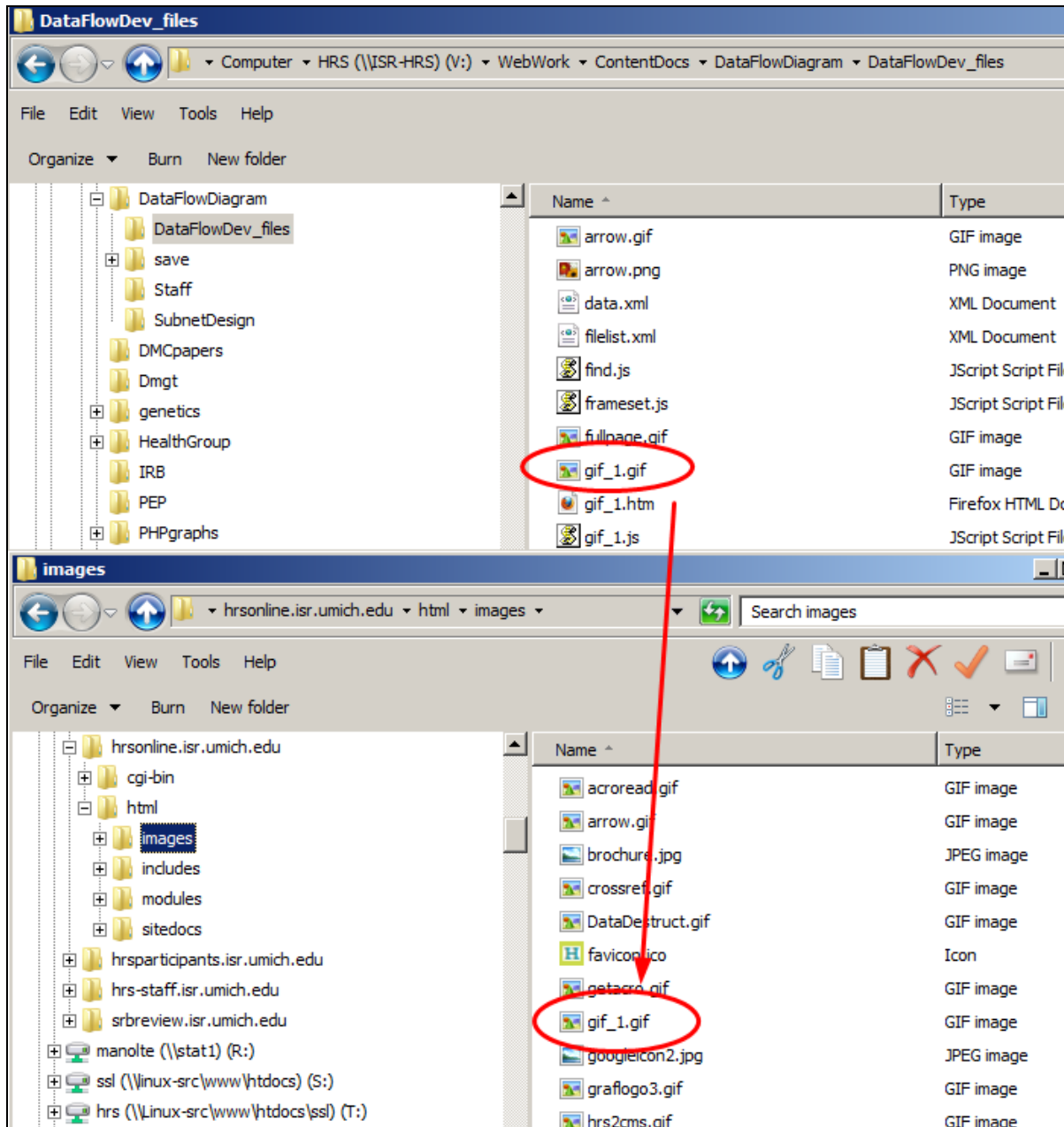


Important: Make sure that the target monitor setting is 1024 x 768.

This will create a sub-folder containing the .gif file that we will use for our image map.

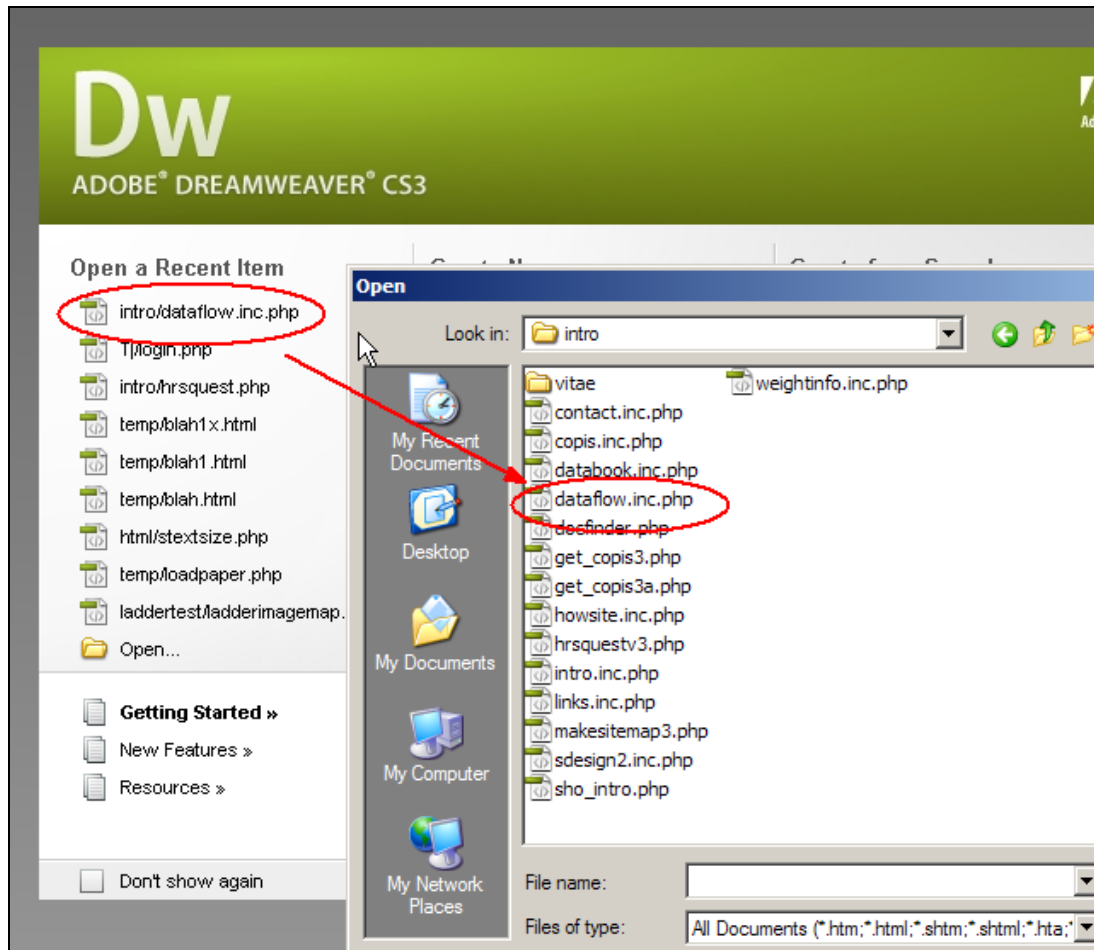


Step 4: Navigate to the sub-folder created by the Visio “Save as Web...” option and copy gif_1.gif to the HRS Web site.



Modifying the Image Map

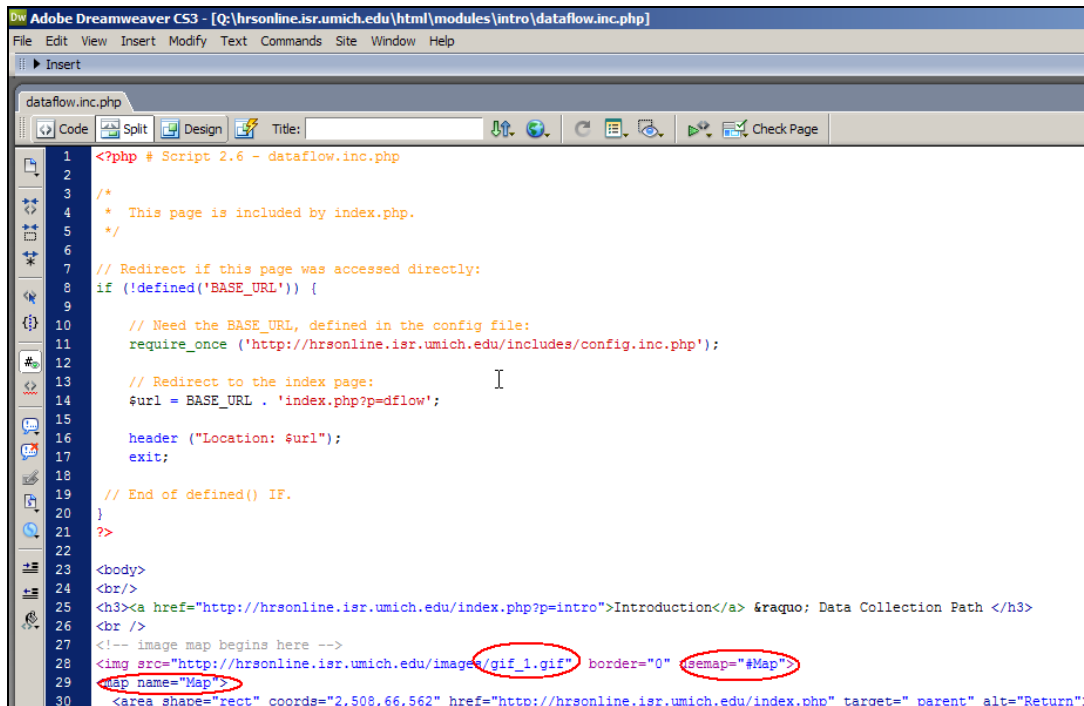
Step 1: Start Dreamweaver, navigate to the Web site folder, and open the Data Flow web page.



We assume that you have Dreamweaver installed on your workstation. If this is not the case, you will need to edit the HTML page by hand. This is entirely possible but is beyond the scope of this document.

Step 2: Use Dreamweaver to Make Additions or Changes. What's happening here is that we have defined a client-side image map (the Data Flow page) on which each icon is referenced by a set of coordinates known as "hot spots." When the user clicks within that coordinate space, an HTML link is triggered. In our case we are using rectangular coordinate sets, but these can be circular or non-symmetric. Thus whenever new icons are added to the Data Flow page, a set of coordinates must be defined so that a link can be established.

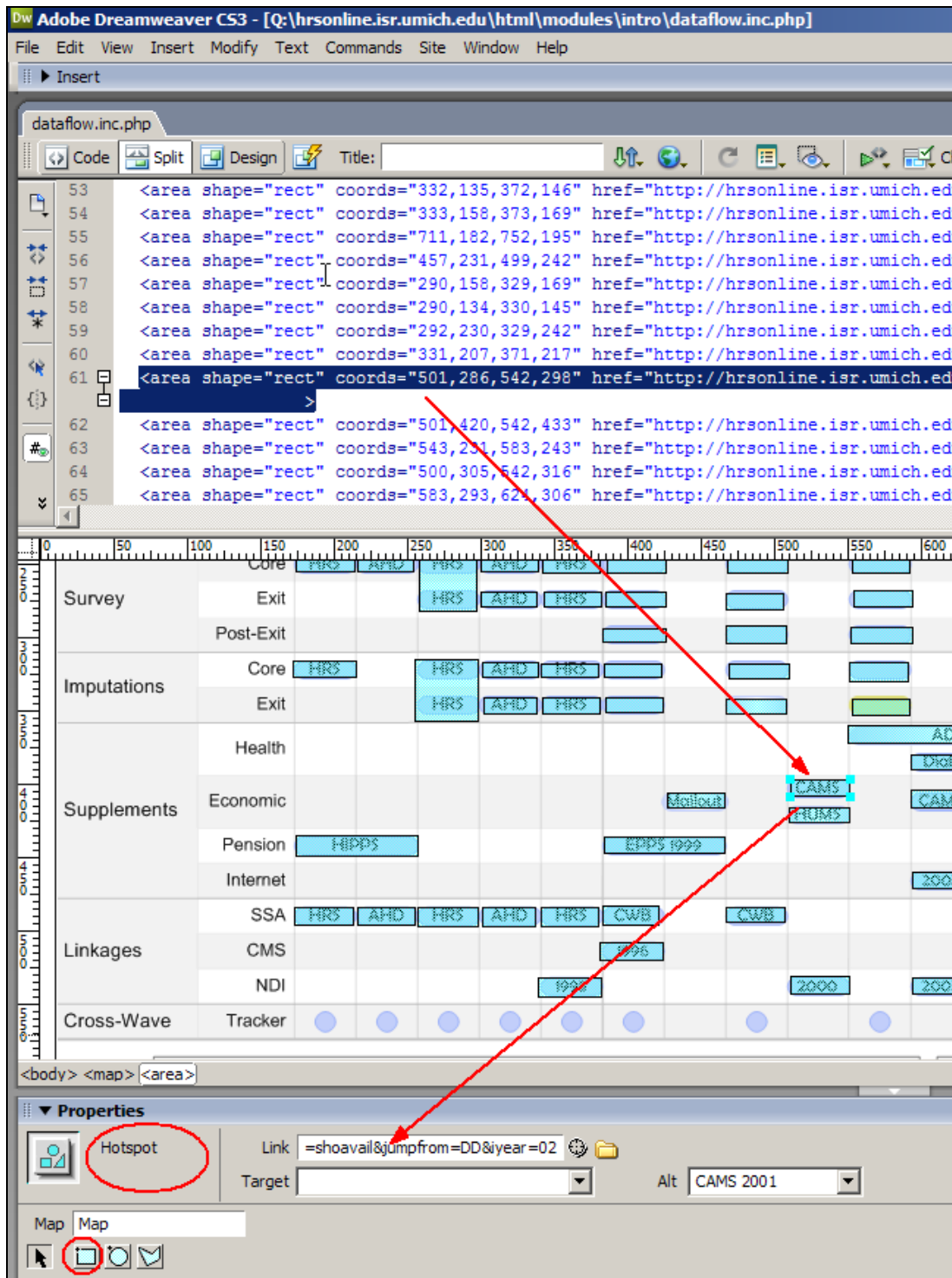
As we see in the following diagram, the image source file for the page is gif_1.gif and all coordinates are defined in the context of the size of that image. If you make change the size of the image in any way, all the coordinates will need to be adjusted. Dreamweaver will help you with this.



```
1 <?php # Script 2.6 - dataflow.inc.php
2
3
4 /*
5  * This page is included by index.php.
6  */
7 // Redirect if this page was accessed directly:
8 if (!defined('BASE_URL')) {
9
10 // Need the BASE_URL, defined in the config file:
11 require_once ('http://hrsonline.isr.umich.edu/includes/config.inc.php');
12
13 // Redirect to the index page:
14 $url = BASE_URL . 'index.php?p=dflow';
15
16 header ("Location: $url");
17 exit;
18
19 // End of defined() IF.
20 }
21 ?>
22
23 <body>
24 <br/>
25 <h3><a href="http://hrsonline.isr.umich.edu/index.php?p=intro">Introduction</a> &raquo; Data Collection Path </h3>
26 <br />
27 <!-- image map begins here -->
28 
29 <map name="Map">
30 <area shape="rect" coords="2,508,66,562" href="http://hrsonline.isr.umich.edu/index.php" target="_parent" alt="Return">
```

Dreamweaver will also help you with creating new coordinate sets. As we can see from the diagram on the next page we are...

- Using the Dreamweaver drawing properties to define a hot spot (middle of diagram).
- Adding properties to the hot spot (bottom of diagram)
 - HTML link
 - target (always “_blank”)
 - alternative text.
- Building HTML code automatically (top).



Once the Dreamweaver additions and corrections are complete you should save the HTML file and exit the application. As a final step, visit the HRS Data Flow page, click on the icon/hot spot you have modified or added, and make sure that the resulting metadata popup contains correct information.